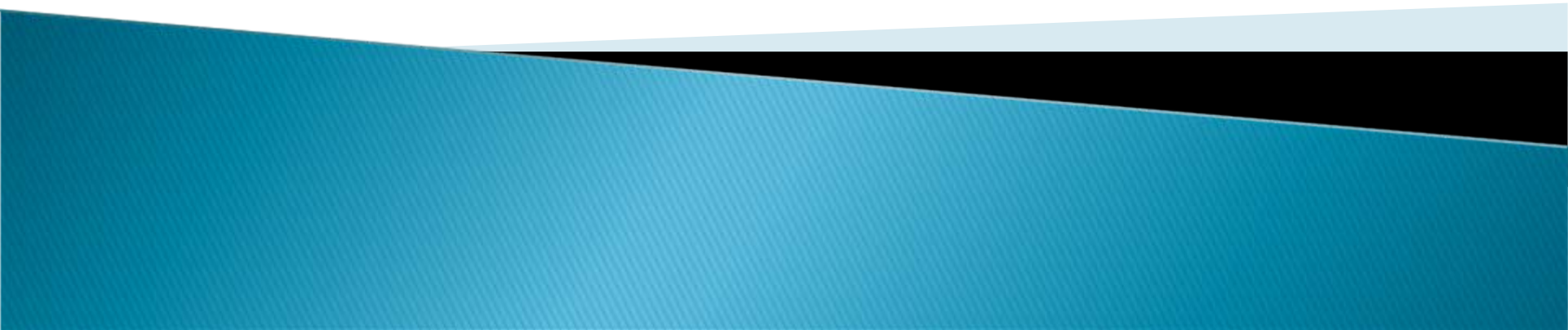
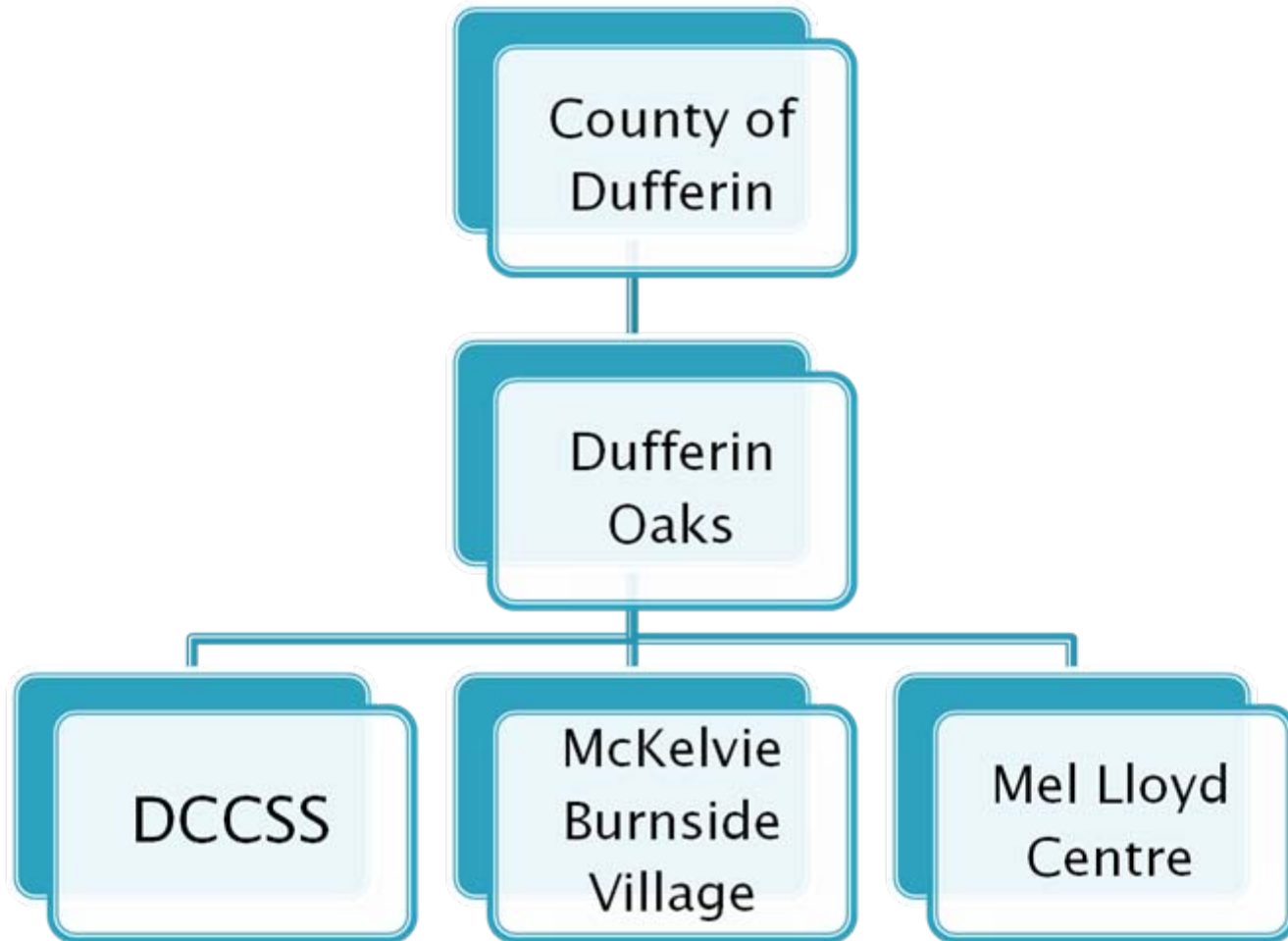



Dufferin Oaks Home for Senior Citizens



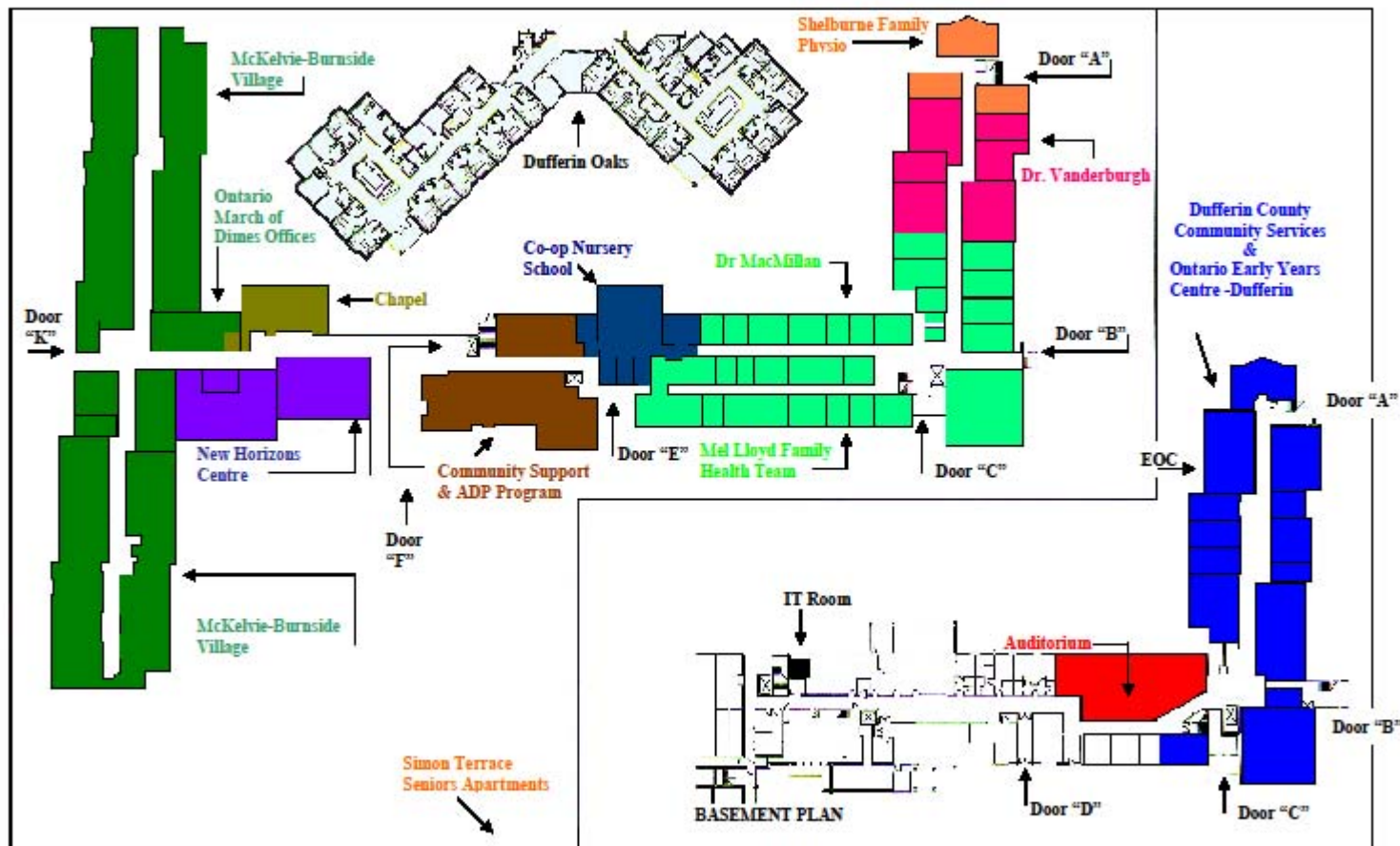
Organizational Structure




Dufferin Oaks

- ▶ 160 bed long term care home
 - ▶ Residents receive 24 hour nursing care and support services and require more care than can be provided in the community
 - ▶ Admissions are processed through CCAC
 - ▶ One home area (32 beds) provides a secure environment for residents who are at risk of elopement
- 


MEL LLOYD CENTRE PROGRAM PROVIDERS



McKelvie Burnside Village

- ▶ 22 unit apartment complex located on the west side of Mel Lloyd Centre
 - ▶ 6 apartments are designated for the physically disabled (Ontario March of Dimes Clients)
 - ▶ 16 apartments are designated for the frail elderly.
 - ▶ Apartments are a mix of market and geared to income rental rates
 - ▶ OMOD provides 24 hour on site staffing to support their clients
- 


McKelvie Burnside Village

- ▶ OMOD staff also provides 24 hour emergency response services to the frail elderly
 - ▶ OMOD, DCCSS and Dufferin Oaks have partnered to provide a congregate dining program for tenants of McKelvie Burnside Village and seniors in the community.
 - ▶ OMOD has also partnered with DCCSS to provide a bathing outreach program and a paid PSW escort for transportation
- 


McKelvie Burnside Village

- ▶ Tenants can easily access DCCSS, the New Horizon's Seniors Club, the Mel Lloyd Family Health Team, CML Labs and Shelburne Physiotherapy as all of these services are within the building
- ▶ Tenants also access hairdresser, tuck shop and social programs at Dufferin Oaks


Dufferin Count Community Support Services (DCCSS)

- ▶ Adult Day Program – Monday through Friday
 - ▶ Meals on Wheels – Shelburne and Orangeville – partner with Dufferin Oaks and Avalon
 - ▶ Frozen Meals program
 - ▶ Volunteer Transportation Program
 - ▶ Paid Driver transportation program
 - ▶ Friendly Visiting
 - ▶ Homemaking
 - ▶ In home respite
 - ▶ Home Maintenance
- 


Mel Lloyd Centre Providers

- ▶ M/B Village and OMOD Dufferin County Outreach Office
 - ▶ Centre Dufferin New Horizons Centre
 - ▶ Shelburne and Area Chaplaincy Network Office
 - ▶ DCCSS Offices and Adult Day Program
 - ▶ E- Learn Network
 - ▶ Future Focus Centre
 - ▶ Mel Lloyd Family Health Team
 - ▶ Dufferin-Wellington-Guelph Public Health Satellite Office
- 

Mel Lloyd Centre Providers

- ▶ CML Healthcare Lab
 - ▶ Alzheimer Society of Dufferin County – Satellite Office
 - ▶ Safe Communities of the Headwaters Hills Country
 - ▶ Shelburne Family Physiotherapy and Exercise Gym
 - ▶ Dr. vanHoogenhuize – Allergist
 - ▶ Shepherd's Cupboard Food Bank
 - ▶ Good Food Box
 - ▶ Services Canada – satellite office
- 

Mel Lloyd Centre Providers

- ▶ Centre Dufferin Ontario Early Years Program
 - ▶ Georgian College Satellite Office
 - ▶ Employment Ontario – Satellite Office
 - ▶ Shelburne and District Lions Club
 - ▶ Alcoholics Anonymous
 - ▶ TOPS
 - ▶ Weight Loss Club
 - ▶ Abiding Ministries – local church group
 - ▶ Indoor Community Walking Path
- 

Opportunities for Participation in a Multi-Service Setting in Shelburne

- ▶ We feel the Mel Lloyd Centre is a prime example of a multi-service setting
 - ▶ We feel that there is an opportunity to expand/better utilize satellite office space if that need were identified – (Hospice Dufferin, CCAC etc.)
 - ▶ Also space could be made available for much needed mental health services
- 